

## AT/13 Triaxial Piezo-Tronic Voltage Accelerometer

10/ 100mV/g,

29gm wt.

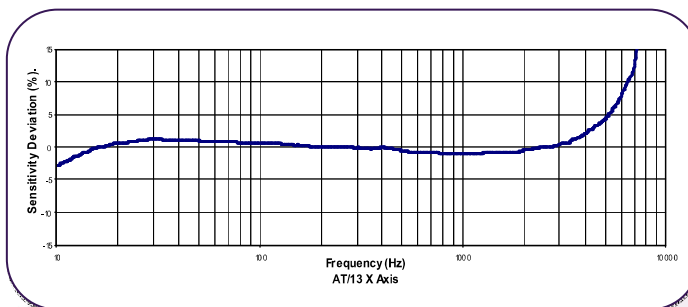
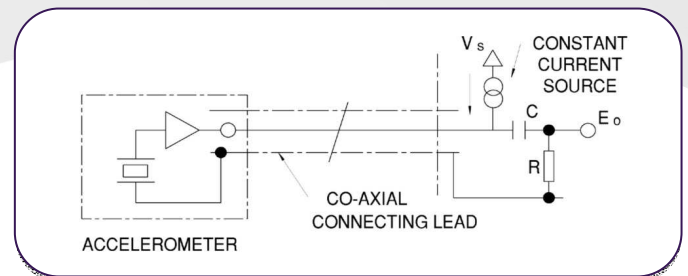
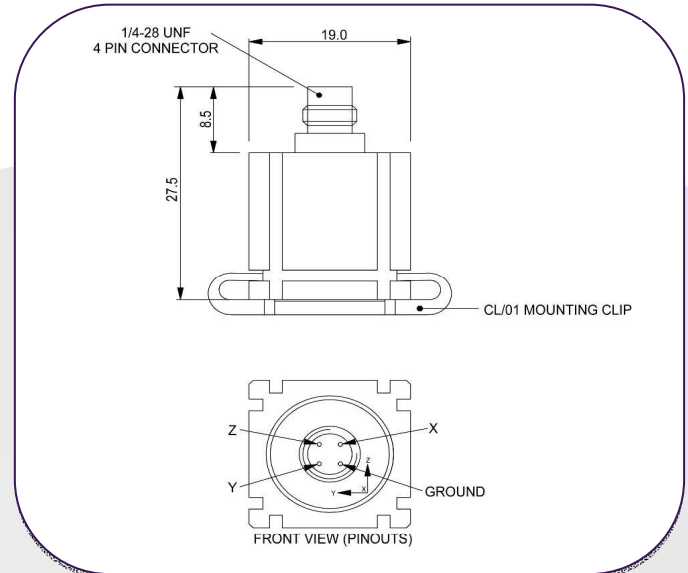
125°C Max Temp

The AT/13 has been developed primarily for the Modal Analysis and Structural test marketplace with particular focus on the Automotive and Aerospace markets. The slotted sides and a slotted base allow it to be mounted on 5 of its faces by sliding into the accompanying clip. Users can then mount the clips using normal glue methods and slide the accelerometers in and out of the clip as required. This ensures perfect repeatability for tests without the need for leaving the accelerometer in situ. In addition, for large channel count testing, all accelerometers can be mounted in the same orientation making software set up easier.

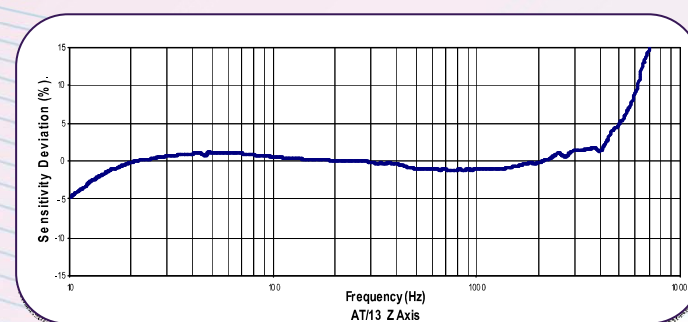
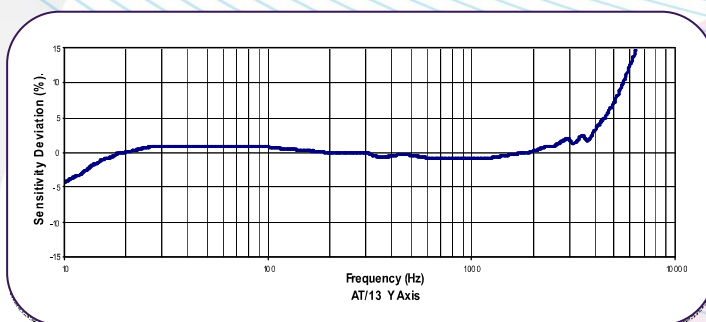
Manufactured in Titanium for low mass and long life, the AT/13 has three individual sensing elements internally mounted in the three orthogonal axes; this provides excellent performance in each axis with minimal cross axis effects.

The AT/13 is available as charge output or as IEPE voltage output.

Clip part number CL/01 can be ordered separately. Also available is the CL/02 which has a thicker base and can be modified to suit specific user applications.



### Typical Frequency Response



**CMV Steck GmbH**

Rheinstraße 92

Tel: + 49 (0) 7275 988 684 - 0

www.CMV-Steck.de

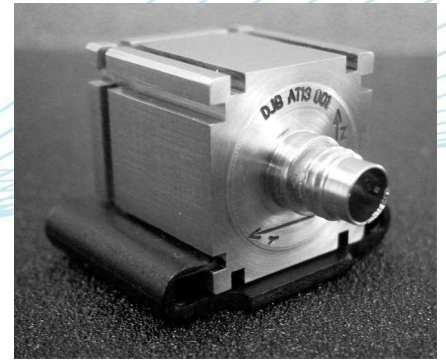
D-76870 Kandel

Fax: + 49 (0) 7275 988 684 - 9

e-mail: info@CMV-Steck.de



ISO 9001:2008

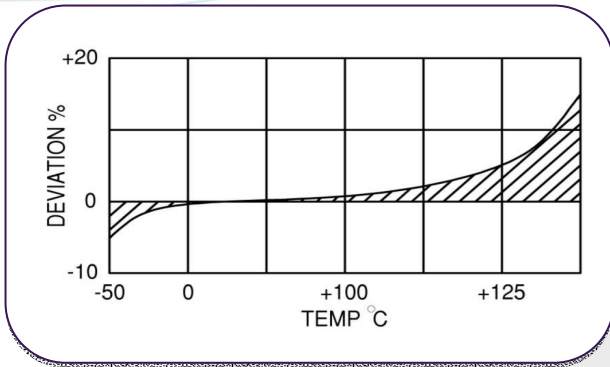


## AT/13 Triaxial Piezo-Tronic Voltage Accelerometer

10/ 100mV/g,

29gm wt.

125°C Max Temp



Temperature Response

Conversion Mode	KONIC / 2 WIRE QVC	
Voltage Sensitivity, mV/g	10	100
Resonant frequency kHz	Z Axis 33	X/Y Axis 20
Cross Axis error % max	5	
Temperature Range °C	-50/+125°C ( HT Version 161°C)	
Voltage sensitivity deviation re 20 °C	-5% @ 50°C +5% @ +125°C (max 161°C)	
Supply voltage V	15/ 35	
Supply voltage mA	2/15	
Bias voltage v (20°C)	9/10	
Settling time to 90% final val. secs	<1	
Max continuous accn. g sine	5000	
Saturation Limit, equiv .g	450/ 500	
Noise level, equiv. mg	3	
Frequency Response	1Hz-5KHz	
L.F corner frequency, Hz	0.1	1
Case material	Titanium Grade 2	
Mounting	Adhesive or CL/01 or CL/02 Mounting Clip	
Weight gm	29	
Case seal	Welded hermetic connector	

### CMV Steck GmbH

Rheinstraße 92  
Tel: + 49 (0) 7275 988 684 - 0  
www.CMV-Steck.de

D-76870 Kandel  
Fax: + 49 (0) 7275 988 684 - 9  
e-mail: info@CMV-Steck.de



ISO 9001:2008