



# Water cooled piezo-electric accelerometer

**A/33**

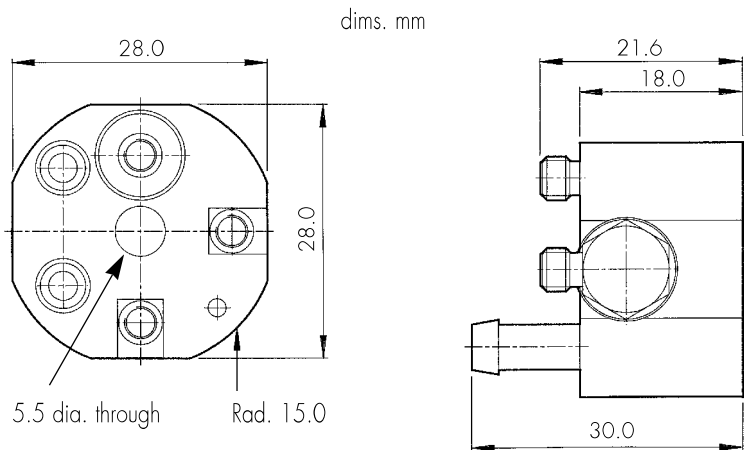
**7pC/g nom./axis • 38gm wt. • 800°C max. temp. with water flow**

**D** JB introduces A/33 triaxial water cooled accelerometer which permits usage on surfaces up to 800°C. These are solutions for Vibration Measurements on exhaust pipes or engines turbo collectors. A mono version is currently under development.

*It is important that the recommended rate of flow of the cooling is maintained permanently when in use at high temperature.  
Failure to do so, could lead to injury and also damage to the unit.*

The 2mm hole between «Y» and «Z» inserts permits the insertion of a thermo-couple to monitor the temperature.

**A/33**



CONVERSION MODE	KONIC
Charge sensitivity pC/g (X, Y, Z)	5/9
Resonant frequency kHz (X, Y, Z)	15
Cross axis error % max	5
Temperature range °C	
• without water flow	-50 /+220
• with a water flow rate of 0.5 ltr/min	+800°C
Base strain sensitivity g/μ strain	0.02
Max continuous accn. g sine	500
Materials	s/steel 303 S31 mtg. block al. alloy
Mounting	1x 5.5mm ø through hole
Weight gm	38
Connector	Microdot skt. 10/32 UNF thd.
Case seal	transducer inserts welded, bonded into hard anodised al. block

**OPTIONS**

- > wideband temperature calibration

**CMV Steck GmbH**

Rheinstraße 92  
Tel: + 49 (0) 7275 988 684 - 0  
www.CMV-Steck.de

D-76870 Kandel  
Fax: + 49 (0) 7275 988 684 - 9  
e-mail: info@CMV-Steck.de